

Blueair

FOOD SERVICE EQUIPMENT LLC

www.BlueAirFse.com

Refrigerators and Freezers

- Durable stainless steel exterior and interior
- Self-diagnostic digital temperature control and monitoring system
- Heavy duty 4" diameter front locking swivel casters
- Standard door locks
- Stay open doors with self closing feature

- Cyclopentane Insulation – Environmentally friendly HFC free foam insulated units
- R-290 refrigerant – increase energy efficiency by up to 25% compared to HFC refrigerants
- All units accommodate full size bun pans
- Rear mounted evaporator pans on all top mount freezer units

Bottom-Mount Reach-Ins Refrigerator / Freezer

- Bottom mount refrigeration system slides out for easy service and maintenance
- All models Energy star rated and CEC Energy Commission Certified
- Left Hinge door models names:
BSR23-L-HC, BSF23-L-HC



BSR23-HC / BSF23-HC



BSR49-HC / BSF49-HC



BSR72-HC / BSF72-HC



MODEL	DESCRIPTION	EXTERIOR L" x D" x H"		CU.FT	SHELVES	CASTERS	WEIGHT		HP	AMP/VOLTAGE
		inch	mm				lbs	kg		
BSR23-HC	Refrigerator 1 Door	26 3/4" x 32 3/8" x 82 3/8"	681 x 814 x 2093	23	4	4	238	108	1/4+	2.0A / 115V / 60Hz
BSR49-HC	Refrigerator 2 Doors	54" x 32 3/8" x 82 3/8"	1,372 x 814 x 2093	49	8	4	373	169	1/4+	2.4A / 115V / 60Hz
BSR72-HC	Refrigerator 3 Doors	81" x 32 3/8" x 82 3/8"	2,057 x 814 x 2093	72	12	6	615	279	1/2	5.5A / 115V / 60Hz
BSF23-HC	Freezer 1 Door	26 3/4" x 32 3/8" x 82 3/8"	681 x 814 x 2093	23	4	4	251	114	1/2	5.6A / 115V / 60Hz
BSF49-HC	Freezer 2 Doors	54" x 32 3/8" x 82 3/8"	1,372 x 814 x 2093	49	8	4	403	183	1/2	6.6A / 115V / 60Hz
BSF72-HC	Freezer 3 Doors	81" x 32 3/8" x 82 3/8"	2,057 x 814 x 2093	72	12	6	626	284	1	9.9A / 115V / 60Hz

BLUE AIR has the right to change specifications without further notice.

Top-Mount Reach-Ins Refrigerator / Freezer

- Top mounted refrigeration system
- Models are Energy star rated and CEC Energy Commission Certified excluding the BSR72T-HC which is not Energy Star Rated
- Left Hinge door models names:
BSR23T-L-HC, BSF23T-L-HC



BSR23T-HC / BSF23T-HC



BSR49T-HC / BSF49T-HC



BSR72T-HC / BSF72T-HC



MODEL	DESCRIPTION	EXTERIOR L" x D" x H"		CU.FT	SHELVES	CASTERS	WEIGHT		HP	AMP/VOLTAGE
		inch	mm				lbs	kg		
BSR23T-HC	Refrigerator 1 Door	26 3/4" x 34 13/32" x 82 3/8"	681 x 874 x 2093	23	4	4	240	109	1/4+	3.0A / 115V / 60Hz
BSR49T-HC	Refrigerator 2 Doors	54" x 34 13/32" x 82 3/8"	1372 x 874 x 2093	49	8	4	359	163	1/4+	3.2A / 115V / 60Hz
BSR72T-HC	Refrigerator 3 Doors	81" x 34 13/32" x 82 3/8"	2,057 x 874 x 2093	72	12	6	531	241	1/2	6.3A / 115V / 60Hz
BSF23T-HC	Freezer 1 Door	26 3/4" x 34 13/32" x 82 3/8"	681 x 874 x 2093	23	4	4	258	117	1/2	4.9A / 115V / 60Hz
BSF49T-HC	Freezer 2 Doors	54" x 34 13/32" x 82 3/8"	1372 x 874 x 2093	49	8	4	390	177	1/2	6.8A / 115V / 60Hz
BSF72T-HC	Freezer 3 Doors	81" x 34 13/32" x 82 3/8"	2057 x 874 x 2093	72	12	6	569	258	1	8.4A / 115V / 60Hz

BLUE AIR has the right to change specifications without further notice.

- All models equipped with NEMA 5-15 power plugs
- Electrodeposition coated evaporator for increased performance
- Lifetime guaranteed heavy duty all metal door handles
- LED interior lighting
- Freezer temperature range between -10°F ~ 5°F

- Refrigerator temperature range between 29°F ~ 39°F
- Proofers temperature range between 56°F ~ 59°F



Glass Door Reach-Ins / Proofers

- Bottom mount refrigeration system slides out for easy service and maintenance
- Optional left hinged door: BSR23G-HC and BSF23GP-HC models only (Special Order)



BSR23G-HC / BSR23GP-HC



BSR49G-HC / BSR49GP-HC



MODEL	DESCRIPTION	EXTERIOR L" x D" x H"		CU.FT	SHELVES	CASTERS	WEIGHT		HP	AMP/VOLTAGE	
		inch	mm				lbs	kg			
BSR23G-HC	Refrigerator 1 Glass Door	26 3/4"	32 7/16" x 82 3/8"	681 x 823 x 2093	23	4	4	271	123	1/4+	2.0A / 115V / 60Hz
BSR49G-HC	Refrigerator 2 Glass Doors	54"	32 7/16" x 82 3/8"	1372 x 823 x 2093	49	8	4	467	212	1/2	5.6A / 115V / 60Hz
BSR23GP-HC	Proofer 1 Glass Door	26 3/4"	32 7/16" x 82 3/8"	681 x 823 x 2093	23	4	4	271	123	1/4+	2.0A / 115V / 60Hz
BSR49GP-HC	Proofer 2 Glass Doors	54"	32 7/16" x 82 3/8"	1372 x 823 x 2093	49	8	4	467	212	1/2	5.6A / 115V / 60Hz

BLUE AIR has the right to change specifications without further notice.

Countertop Glass Door Merchandiser

- Painted Steel interior and exterior
- Polyurethane insulation – high density foamed in place and environmentally safe
- Epoxy coated wire shelves with adjustable shelving height



BAGR Series

- Fluorescent lit display panel and interior
- Double paned glass door
- Adjustable legs for leveling – no casters



BAGR7W-HC

MODEL	DESCRIPTION	EXTERIOR L" x D" x H"		CU.FT	SHELVES	WEIGHT		HP	AMP/VOLTAGE	
		inch	mm			lbs	kg			
BAGR7W-HC	Refrigerator 1 Glass Door	21 1/4"	23 3/4" x 38"	540 x 600 x 965	7	2	132	60	1/5	3.1A / 115V / 60Hz

CALIFORNIA

223 W. ROSECRANS AVE. GARDENA, CA 90248
T: 310-808-0102 / F: 310-808-0262

HOUSTON

9604 W. TIDWELL ROAD, HOUSTON, TX 77041
T: 713-460-5229 / F: 713-760-5232

NEW JERSEY

9 W. SHELTON TERRACE #A HILLSIDE, NJ 07205
T: 908-688-0970 / F: 908-688-8143

Glass Door Merchandisers

- Painted Steel interior and exterior
- Self-diagnostic digital temperature control and monitoring system
- Polyurethane insulation – high density foamed in place and environmentally safe
- R-290 refrigerant – increase energy efficiency by up to 25% compared to HFC refrigerants

- Self contained bottom mounted compressor
- Epoxy coated wire shelves with adjustable shelving height
- All models equipped with NEMA 5-15 plugs



Glass Door Merchandiser Refrigerator

BKGM Series

- LED lit display panel and interior
- Refrigerator temperature range between 33°F ~ 38°F
- Standard door locks on swing door models
- Front locking casters with leveling shims



BKGM12-HC
BKGM14-HC
BKGM23-HC



BKGM48SL-HC



BKGM49-HC



BKGM72-HC

MODEL	DESCRIPTION	EXTERIOR L" x D" x H"		CU.FT	SHELVES	CASTERS	WEIGHT		HP	AMP/VOLTAGE
		inch	mm				lbs	kg		
BKGM12-HC	Refrigerator 1 Door	24 1/4" x 24" x 63 1/4"	615 x 610 x 1606	12	4	4	190	86	1/7	2.1A / 115V / 60Hz
BKGM14-HC	Refrigerator 1 Door	24 1/4" x 24" x 76 1/4"	615 x 610 x 1936	14	4	4	227	103	1/7	2.1A / 115V / 60Hz
BKGM23-HC	Refrigerator 1 Door	27" x 31 1/2" x 81 1/4"	685 x 800 x 2065	23	4	4	293	133	1/7	2.1A / 115V / 60Hz
BKGM48SL-HC	Refrigerator 2 Door	54 7/16" x 29 1/8" x 84 1/16"	1382 x 740 x 2135	44.85	8	4	511	232	1/4	4.2A / 115V / 60Hz
BKGM49-HC	Refrigerator 2 Door	54 3/8" x 31 1/2" x 81 1/4"	1382 x 800 x 2065	49	8	4	485	220	1/4	3.2A / 115V / 60Hz
BKGM72-HC	Refrigerator 3 Door	82" x 31 1/2" x 81 1/4"	2079 x 800 x 2065	72	12	6	653	296	1/4	4.2A / 115V / 60Hz

BLUE AIR has the right to change specifications without further notice.

Glass Door Merchandiser Freezer

BKGF Series

- Freezer models are equipped with triple paned glass doors
- Standard self closing and stay open doors on swing door models
- Freezer temperature range between -10°F ~ 0°F
- R-290 Refrigerant
- NEMA 5-15 plugs (BKGF72-HC : NEMA L14-20)



BKGF23-HC



BKGF49-HC



BKGF72-HC

MODEL	DESCRIPTION	EXTERIOR L" x D" x H"		CU.FT	SHELVES	CASTERS	WEIGHT		HP	AMP/VOLTAGE
		inch	mm				lbs	kg		
BKGF23-HC	Freezer 1 Doors	27" x 31 1/2" x 81 1/4"	685 x 800 x 2065	23	4	4	309	140	1/2	6.3A / 115V / 60Hz
BKGF49-HC	Freezer 2 Doors	54 3/8" x 31 1/2" x 81 1/4"	1382 x 800 x 2065	49	8	4	498	226	3/4	8.6A / 115V / 60Hz
BKGF72-HC	Freezer 3 Doors	82" x 31 1/2" x 81 1/4"	2079 x 800 x 2065	72	12	6	663	768	1	6.2A / 115V/230V / 60Hz

*BLUE AIR has the right to change specifications without further notice.

Pizza Prep Tables

- Stainless steel cabinet construction
- Polyurethane insulation – foamed in place and environmentally safe
- Front breathing side mounted compressor
- Standard 19" deep, 1/2" thick reversible cutting board
- Adjustable heavy-duty epoxy-coated wire shelves

- Lifetime guaranteed heavy duty all metal door handles
- Food pans not included



BAPP44-HC



BAPP67-HC



BAPP93-HC

MODEL	DESCRIPTION	EXTERIOR L" x D" x H"		CU.FT	SHELVES	PANS	CASTERS	WEIGHT		HP	AMP/VOLTAGE
		inch	mm					lbs	kg		
BAPP44-HC	Refrigerator 1 Door	44 3/8" x 36 1/2" x 42"	1127 x 927 x 1067	11.3	2	1/3x6	4	287	130	3/8	3.5A / 115V / 60Hz
BAPP67-HC	Refrigerator 2 Doors	67" x 36 1/2" x 42"	1702 x 927 x 1067	20.2	4	1/3x9	4	368	167	3/8	3.5A / 115V / 60Hz
BAPP93-HC	Refrigerator 2 Doors	93 1/4" x 36 1/2" x 42"	2369 x 927 x 1067	30.8	6	1/3x12	4	452	205	3/8	3.5A / 115V / 60Hz

*BLUE AIR has the right to change specifications without further notice.

Pizza Prep Tables – Drawer Models

- Stainless steel drawer options
- Standard 19" deep 1/2" thick reversible cutting board
- Four (4) 4" inch casters standard



BAPP44-D2-HC



BAPP67-D4-HC



BAPP93-D4LM-HC



BAPP93-D4RM-HC



BAPP93-D6-HC

MODEL	DESCRIPTION	EXTERIOR L" x D" x H"		CU.FT	SHELVES	PANS	CASTERS	WEIGHT		HP	AMP/VOLTAGE
		inch	mm					lbs	kg		
BAPP44-D2-HC	Refrigerator 2 Drawer	44 3/8" x 36 1/2" x 42"	1127 x 927 x 1067	11.3	0	1/3x6	4	320	145	3/8	3.5A / 115V / 60Hz
BAPP67-D4-HC	Refrigerator 4 Drawer	67" x 36 1/2" x 42"	1702 x 927 x 1067	20.2	0	1/3x9	4	423	192	3/8	3.5A / 115V / 60Hz
BAPP93-D4LM-HC	Refrigerator 4 Drawer	93 1/4" x 36 1/2" x 42"	2369 x 927 x 1067	30.8	1	1/3x12	4	514	233	3/8	3.5A / 115V / 60Hz
BAPP93-D4RM-HC	Refrigerator 4 Drawer	93 1/4" x 36 1/2" x 42"	2369 x 927 x 1067	30.8	1	1/3x12	4	514	233	3/8	3.5A / 115V / 60Hz
BAPP93-D6-HC	Refrigerator 6 Drawer	93 1/4" x 36 1/2" x 42"	2369 x 927 x 1067	30.8	0	1/3x12	4	545	247	3/8	3.5A / 115V / 60Hz

*BLUE AIR has the right to change specifications without further notice.

CALIFORNIA

223 W. ROSECRANS AVE. GARDENA, CA 90248
T: 310-808-0102 / F: 310-808-0262

HOUSTON

9604 W. TIDWELL ROAD, HOUSTON, TX 77041
T: 713-460-5229 / F: 713-760-5232

NEW JERSEY

9 W. SHELTON TERRACE #A HILLSIDE, NJ 07205
T: 908-688-0970 / F: 908-688-8143

Food Prep Tables

- Stainless steel exterior and interior
- Self-diagnostic digital temperature control and monitoring system
- Stay open doors with self closing feature
- Cyclopentane Insulation – Environmentally friendly HFC free foam insulated units
- R-290 refrigerant – increase energy efficiency by up to 25% compared to HFC refrigerants
- Lifetime guaranteed heavy duty all metal door handles
- Insulated pan cover with a stainless steel divider

- Epoxy coated wire shelves with adjustable shelving height
- Self contained rear mounted compressor
- Models have a temperature range between 33°F ~ 39°F
- Electrodeposition coated evaporator for increased performance
- All models equipped with NEMA 5-15 power plugs



Sandwich Prep Tables

- Standard 9 1/2" deep, 1/2" thick cutting board included
- Four (4) 4" diameter swivel casters with front brakes standard
- Standard 1/6 4" deep food pans are provided
- Field reversible door: BLPT28-HC



BLPT28-HC



BLPT36-HC



BLPT48-HC / BLPT60-HC



BLPT72-HC

MODEL	DESCRIPTION	EXTERIOR L" x D" x H"		CU.FT	SHELVES	PANS	CASTERS	WEIGHT			AMP/VOLTAGE
		inch	mm					lbs	kg	HP	
BLPT28-HC	Refrigerator 1 Door	27 1/2" x 33 1/32" x 42 1/2"	699 x 839 x 1082	7	1	1/6x6, 1/9x2	4	157	71	1/4+	4.0A / 115V / 60Hz
BLPT36-HC	Refrigerator 2 Doors	36 3/8" x 33 1/32" x 42 1/2"	923 x 839 x 1082	9.5	2	1/6x10	4	187	85	1/4+	4.1A / 115V / 60Hz
BLPT48-HC	Refrigerator 2 Doors	48 3/8" x 33 1/32" x 42 1/2"	1227 x 839 x 1082	13.1	2	1/6x12	4	223	101	1/4+	4.5A / 115V / 60Hz
BLPT60-HC	Refrigerator 2 Doors	60 3/8" x 33 1/32" x 42 1/2"	1533 x 839 x 1082	16.7	2	1/6x16	4	258	117	1/4+	4.7A / 115V / 60Hz
BLPT72-HC	Refrigerator 3 Doors	72 3/8" x 33 1/32" x 42 1/2"	1839 x 839 x 1082	20.2	3	1/6x18	4	309	140	1/4+	5.3A / 115V / 60Hz

*BLUE AIR has the right to change specifications without further notice.

Sandwich Prep Tables – Drawer Models

- Stainless steel drawer options
- Standard 9 1/2" deep, 1/2" thick cutting board included
- Four (4) 4" diameter swivel casters with front brakes standard
- Standard 1/6 4" deep food pans are provided on top (Unit accommodates up to 6" deep pans on top)
- Pans are not included for each drawer



BLPT28-D2-HC



BLPT48-D4-HC / BLPT60-D4-HC



BLPT72-D4LM-HC



BLPT72-D4RM-HC



BLPT72-D6-HC

MODEL	DESCRIPTION	EXTERIOR L" x D" x H"		CU.FT	PANS	CASTERS	WEIGHT			AMP/VOLTAGE
		inch	mm				lbs	kg	HP	
BLPT28-D2-HC	Refrigerator 2 Drawers	27 1/2" x 33 1/32" x 42 1/2"	699 x 839 x 1082	7	1/6x6, 1/9x2	4	181	82	1/4+	4.1A / 115V / 60Hz
BLPT48-D4-HC	Refrigerator 4 Drawers	48 3/8" x 33 1/32" x 42 1/2"	1227 x 839 x 1082	13.1	1/6x12	4	269	122	1/4+	4.7A / 115V / 60Hz
BLPT60-D4-HC	Refrigerator 4 Drawers	60 3/8" x 33 1/32" x 42 1/2"	1533 x 839 x 1082	16.7	1/6x16	4	315	143	1/4+	4.7A / 115V / 60Hz
BLPT72-D4LM-HC	Refrigerator 4 Drawers	72 3/8" x 33 1/32" x 42 1/2"	1839 x 839 x 1082	20.2	1/6x18	4	348	158	1/4+	5.3A / 115V / 60Hz
BLPT72-D4RM-HC	Refrigerator 4 Drawers	72 3/8" x 33 1/32" x 42 1/2"	1839 x 839 x 1082	20.2	1/6x18	4	348	158	1/4+	5.3A / 115V / 60Hz
BLPT72-D6-HC	Refrigerator 6 Drawers	72 3/8" x 33 1/32" x 42 1/2"	1839 x 839 x 1082	20.2	1/6x18	4	386	175	1/4+	5.3A / 115V / 60Hz

*BLUE AIR has the right to change specifications without further notice.

Mega Top Sandwich Tables

- 50% more pan capacity compared to standard prep tables
- Standard 9 1/2" deep, 1/2" thick cutting board included
- Four (4) 4" diameter swivel casters with front brakes standard
- 1/6 / 4" food pans are provided. Unit accommodates 6" deep pans
- Field reversible door: BLMT28-HC



BLMT28-HC



BLMT36-HC / BLMT48-HC



BLMT60-HC



BLMT72-HC

MODEL	DESCRIPTION	EXTERIOR L" x D" x H"		CU.FT	SHELVES	PANS	CASTERS	WEIGHT		HP	AMP/VOLTAGE
		inch	mm					lbs	kg		
BLMT28-HC	Refrigerator 1 Door	27 1/2" x 37 9/32" x 44 1/4"	699 x 947 x 1122	7	1	1/6x9, 1/9x3	4	161	73	1/4+	4.1A / 115V / 60Hz
BLMT36-HC	Refrigerator 2 Doors	36 3/8" x 37 9/32" x 44 1/4"	923 x 947 x 1122	9.5	2	1/6x15	4	190	86	1/4+	4.1A / 115V / 60Hz
BLMT48-HC	Refrigerator 2 Doors	48 3/8" x 37 9/32" x 44 1/4"	1227 x 947 x 1122	13.1	2	1/6x18	4	227	103	1/4+	4.7A / 115V / 60Hz
BLMT60-HC	Refrigerator 2 Doors	60 3/8" x 37 9/32" x 44 1/4"	1533 x 947 x 1122	16.7	2	1/6x24	4	276	125	1/4+	4.9A / 115V / 60Hz
BLMT72-HC	Refrigerator 3 Doors	72 3/8" x 37 9/32" x 44 1/4"	1839 x 947 x 1122	20.2	3	1/6x30	4	311	141	1/4+	5.4A / 115V / 60Hz

*BLUE AIR has the right to change specifications without further notice.

Mega Top Sandwich Tables – Drawer Models

- 50% more pan capacity compared to standard prep tables
- Stainless steel drawer options
- Standard 9 1/2" deep, 1/2" thick cutting board included
- Four (4) 4" diameter swivel casters with front brakes standard
- Standard 1/6" deep food pans are provided on top (Unit accommodates up to 6" deep pans on top)
- Pans are not included for each drawer



BLMT28-D2-HC



BLMT60-D4-HC



BLMT72-D4RM-HC



BLMT48-D4-HC



BLMT72-D4LM-HC



BLMT72-D6-HC

MODEL	DESCRIPTION	EXTERIOR L" x D" x H"		CU.FT	PANS	CASTERS	WEIGHT		HP	AMP/VOLTAGE
		inch	mm				lbs	kg		
BLMT28-D2-HC	Refrigerator 2 Doors	27 1/2" x 37 9/32" x 44 1/4"	699 x 947 x 1122	7	1/6x9, 1/9x3	4	187	85	1/4+	4.2A / 115V / 60Hz
BLMT48-D4-HC	Refrigerator 4 Doors	48 3/8" x 37 9/32" x 44 1/4"	1227 x 947 x 1122	13.1	1/6x18	4	278	126	1/4+	4.5A / 115V / 60Hz
BLMT60-D4-HC	Refrigerator 4 Doors	60 3/8" x 37 9/32" x 44 1/4"	1533 x 947 x 1122	16.7	1/6x24	4	320	145	1/4+	5.0A / 115V / 60Hz
BLMT72-D4LM-HC	Refrigerator 4 Doors	72 3/8" x 37 9/32" x 44 1/4"	1839 x 947 x 1122	20.2	1/6x30	4	362	164	1/4+	5.4A / 115V / 60Hz
BLMT72-D4RM-HC	Refrigerator 4 Doors	72 3/8" x 37 9/32" x 44 1/4"	1839 x 947 x 1122	20.2	1/6x30	4	362	164	1/4+	5.4A / 115V / 60Hz
BLMT72-D6-HC	Refrigerator 6 Doors	72 3/8" x 37 9/32" x 44 1/4"	1839 x 947 x 1122	20.2	1/6x30	4	386	175	1/4+	5.5A / 115V / 60Hz

*BLUE AIR has the right to change specifications without further notice.

CALIFORNIA

223 W. ROSECRANS AVE. GARDENA, CA 90248
T: 310-808-0102 / F: 310-808-0262

HOUSTON

9604 W. TIDWELL ROAD, HOUSTON, TX 77041
T: 713-460-5229 / F: 713-760-5232

NEW JERSEY

9 W. SHELTON TERRACE #A HILLSIDE, NJ 07205
T: 908-688-0970 / F: 908-688-8143

Undercounters

- Stainless steel exterior and interior
- Self-diagnostic digital temperature control and monitoring system
- Stay open doors with self closing feature
- Cyclopentane Insulation – Environmentally friendly HFC free foam insulated units
- R-290 refrigerant – increase energy efficiency by up to 25% compared to HFC refrigerants
- Lifetime guaranteed heavy duty all metal door handles
- Epoxy coated wire shelves with adjustable shelving height

- Self contained rear mounted compressor
- Four (4) 4" diameter swivel casters with front brakes standard
- All models equipped with NEMA 5-15 power plugs
- Freezer temperature range between -10°F ~ 5°F
- Refrigerator temperature range between 33°F ~ 39°F



Undercounter Refrigerators / Freezers

- Field reversible door: BLUR28-HC and BLUF28-HC



BLUR28-HC / BLUF28-HC

BLUR36-HC / BLUF36-HC
BLUR48-HC / BLUF48-HC
BLUR60-HC / BLUF60-HC

BLUR72-HC

MODEL	DESCRIPTION	EXTERIOR L" x D" x H"		CU.FT	SHELVES	CASTERS	WEIGHT		HP	AMP/VOLTAGE
		inch	mm				lbs	kg		
BLUR28-HC	Refrigerator 1 Door	27 1/2" x 33 1/32" x 35 7/8"	699 x 839 x 912	7	2	4	139	63	1/4+	3.6A / 115V / 60Hz
BLUR36-HC	Refrigerator 2 Doors	36 3/8" x 33 1/32" x 35 7/8"	923 x 839 x 912	9.5	4	4	163	74	1/4+	3.8A / 115V / 60Hz
BLUR48-HC	Refrigerator 2 Doors	48 3/8" x 33 1/32" x 35 7/8"	1227 x 839 x 912	13.1	4	4	196	89	1/4+	3.9A / 115V / 60Hz
BLUR60-HC	Refrigerator 2 Doors	60 3/8" x 33 1/32" x 35 7/8"	1533 x 839 x 912	16.7	4	4	225	102	1/4+	4.7A / 115V / 60Hz
BLUR72-HC	Refrigerator 3 Doors	72 3/8" x 33 1/32" x 35 7/8"	1839 x 839 x 912	20.2	6	4	263	119	1/4+	5.2A / 115V / 60Hz
BLUF28-HC	Freezer 1 Door	27 1/2" x 33 1/32" x 35 7/8"	699 x 839 x 912	7	2	4	139	63	1/4+	3.2A / 115V / 60Hz
BLUF36-HC	Freezer 2 Doors	36 3/8" x 33 1/32" x 35 7/8"	923 x 839 x 912	9.5	4	4	172	78	1/2	5.2A / 115V / 60Hz
BLUF48-HC	Freezer 2 Doors	48 3/8" x 33 1/32" x 35 7/8"	1227 x 839 x 912	13.1	4	4	205	93	1/2	6.0A / 115V / 60Hz
BLUF60-HC	Freezer 2 Doors	60 3/8" x 33 1/32" x 35 7/8"	1533 x 839 x 912	16.7	4	4	238	108	1/2	6.2A / 115V / 60Hz

*BLUE AIR has the right to change specifications without further notice.

Undercounter – Drawer Models

- Stainless steel drawer options
- Pans are not included for each drawer



BLUR28-D2-HC



BLUR48-D4-HC / BLUR60-D4-HC



BLUR72-D4LM-HC



BLUR72-D4RM-HC



BLUR72-D6-HC

MODEL	DESCRIPTION	EXTERIOR L" x D" x H"		CU.FT	CASTERS	WEIGHT		HP	AMP/VOLTAGE
		inch	mm			lbs	kg		
BLUR28-D2-HC	Refrigerator 2 Drawers	27 1/2" x 33 1/32" x 35 7/8"	699 x 839 x 912	7	4	163	74	1/4+	4.0A / 115V / 60Hz
BLUR48-D4-HC	Refrigerator 4 Drawers	48 3/8" x 33 1/32" x 35 7/8"	1227 x 839 x 912	13.1	4	238	108	1/4+	5.0A / 115V / 60Hz
BLUR60-D4-HC	Refrigerator 4 Drawers	60 3/8" x 33 1/32" x 35 7/8"	1533 x 839 x 912	16.7	4	271	123	1/4+	5.0A / 115V / 60Hz
BLUR72-D4RM-HC	Refrigerator 4 Drawers	72 3/8" x 33 1/32" x 35 7/8"	1839 x 839 x 912	20.2	4	304	138	1/4+	5.2A / 115V / 60Hz
BLUR72-D4LM-HC	Refrigerator 4 Drawers	72 3/8" x 33 1/32" x 35 7/8"	1839 x 839 x 912	20.2	4	304	138	1/4+	5.2A / 115V / 60Hz
BLUR72-D6-HC	Refrigerator 6 Drawers	72 3/8" x 33 1/32" x 35 7/8"	1839 x 839 x 912	20.2	4	328	149	1/4+	5.0A / 115V / 60Hz

*BLUE AIR has the right to change specifications without further notice.

Worktop Refrigerators / Freezers

- 6" back splash guard models
- Field reversible door – BLUR28 and BLUF28 models



BLUR28-WT-HC
BLUF28-WT-HC



BLUR36-WT-HC
BLUF36-WT-HC



BLUR48-WT-HC / BLUR60-WT-HC
BLUF48-WT-HC / BLUF60-WT-HC



BLUR72-WT-HC

Worktop Refrigerators

MODEL	DESCRIPTION	EXTERIOR L" x D" x H"		CU.FT	SHELVES	CASTERS	WEIGHT		HP	AMP/VOLTAGE
		inch	mm				lbs	kg		
BLUR28-WT-HC	Refrigerator 1 Door	27 3/4" x 33 1/32" x 41 55/64"	703 x 839 x 1063	7	2	4	150	68	1/4+	3.6A / 115V / 60Hz
BLUR36-WT-HC	Refrigerator 2 Doors	36 1/2" x 33 1/32" x 41 55/64"	927 x 839 x 1063	9.5	4	4	180	82	1/4+	3.8A / 115V / 60Hz
BLUR48-WT-HC	Refrigerator 2 Doors	48 1/2" x 33 1/32" x 41 55/64"	1231 x 839 x 1063	13.1	4	4	214	97	1/4+	3.9A / 115V / 60Hz
BLUR60-WT-HC	Refrigerator 2 Doors	60 1/2" x 33 1/32" x 41 55/64"	1537 x 839 x 1063	16.7	4	4	256	116	1/4+	4.7A / 115V / 60Hz
BLUR72-WT-HC	Refrigerator 3 Doors	72 3/4" x 33 1/32" x 41 55/64"	1843 x 839 x 1063	20.2	6	4	298	135	1/4+	5.2A / 115V / 60Hz

Worktop Freezers

MODEL	DESCRIPTION	EXTERIOR L" x D" x H"		CU.FT	SHELVES	CASTERS	WEIGHT		HP	AMP/VOLTAGE
		inch	mm				lbs	kg		
BLUF28-WT-HC	Freezer 1 Door	27 3/4" x 33 1/32" x 41 55/64"	703 x 839 x 1063	7	2	4	156	71	1/4+	3.2A / 115V / 60Hz
BLUF36-WT-HC	Freezer 2 Doors	36 1/2" x 33 1/32" x 41 55/64"	927 x 839 x 1063	9.5	4	4	189	86	1/2	5.2A / 115V / 60Hz
BLUF48-WT-HC	Freezer 2 Doors	48 1/2" x 33 1/32" x 41 55/64"	1231 x 839 x 1063	13.1	4	4	223	101	1/2	6.0A / 115V / 60Hz
BLUF60-WT-HC	Freezer 2 Doors	60 1/2" x 33 1/32" x 41 55/64"	1537 x 839 x 1063	16.7	4	4	267	121	1/2	6.2A / 115V / 60Hz

*BLUE AIR has the right to change specifications without further notice.

Chef Bases

- Stainless steel cabinet construction
- Polyurethane insulation – foamed in place and environmentally safe
- Designed to accommodate countertop cooking equipment
- Heavy duty top panel
- Front breathing side mounted compressor
- R-290 refrigerant – increase energy efficiency by up to 25% compared to HFC refrigerant
- Lifetime guaranteed heavy duty all metal door handles

- Models have a temperature range between 33°F ~ 39°F
- Removeable front thermometer panel and grille for easy access to refrigeration system
- Four (4) 4" diameter swivel casters with front brakes standard
- All models equipped with NEMA 5-15 power plugs



BACB36-HC



BACB53M-HC



BACB86M-HC



BACB48-HC



BACB74M-HC



BACB96M-HC

MODEL	DESCRIPTION	EXTERIOR L" x D" x H"		CU.FT	DRAWERS	PANS	CASTERS	WEIGHT		HP	AMP/VOLTAGE
		inch	mm					lbs.	kg		
BACB36-HC	Refrigerator	36" x 30 1/2" x 25 1/8"	914 x 775 x 637	5.7	2	2+4(1/4")	4	170	77	1/4	3.0A / 115V / 60Hz
BACB48-HC	Refrigerator	48" x 30 1/2" x 25 1/8"	1219 x 775 x 637	8.6	2	4+4(1/4")	4	207	94	1/4	3.0A / 115V / 60Hz
BACB53M-HC	Refrigerator	53" x 31" x 25 1/2"	1346 x 787 x 648	9.8	2	6	4	220	100	1/4	3.0A / 115V / 60Hz
BACB74M-HC	Refrigerator	74 1/8" x 31" x 25 1/2"	1882 x 787 x 648	14.3	4	8	4	282	128	1/4	3.0A / 115V / 60Hz
BACB86M-HC	Refrigerator	86 1/4" x 31" x 25 1/2"	2191 x 787 x 648	17.2	4	8	6	317	144	3/8	3.5A / 115V / 60Hz
BACB96M-HC	Refrigerator	96 1/8" x 31" x 25 1/2"	2442 x 787 x 648	21.4	4	12	6	342	155	3/8	3.5A / 115V / 60Hz

*BLUE AIR has the right to change specifications without further notice.

CALIFORNIA

223 W. ROSECRANS AVE. GARDENA, CA 90248
T: 310-808-0102 / F: 310-808-0262

HOUSTON

9604 W. TIDWELL ROAD, HOUSTON, TX 77041
T: 713-460-5229 / F: 713-760-5232

NEW JERSEY

9 W. SHELTON TERRACE #A HILLSIDE, NJ 07205
T: 908-688-0970 / F: 908-688-8143

Bar Equipments

- Galvanized steel cabinet with stainless steel floor construction
- Polyurethane insulation – foamed in place and environmentally safe
- Most models are equipped with front breathing side mounted compressor
- BBB23 and BDD23 models have back mounted compressors
- R-290 refrigerant – increase energy efficiency by up to 25% compared to HFC refrigerant

- Models have a temperature range between 33°F ~ 39°F
- Optional casters – casters are standard on BBB23 and BDD23 models
- Optional Swivel casters
- All models equipped with NEMA 5-15 power plugs



Keg Coolers

- Standard 12" stainless steel beer tower
- Heavy duty stainless steel countertop
- Recessed door handles
- 1" height adjustable shelving
- Field reversible door: BDD23-HC



BDD23-1B(S)-HC



BDD59-2B(S)-HC



BDD69-3B(S)-HC



BDD90-4B(S)-HC

MODEL	DESCRIPTION	EXTERIOR L" x D" x H"		CU.FT	BARRELS(1/2)	TOWERS	WEIGHT		HP	AMP/VOLTAGE
		inch	mm				lbs	kg		
BDD23-1B(S)-HC	Keg Cooler 1 Door	23 3/8" x 31 1/8" x 39 1/8"	595 x 792 x 995	7.9	1	1 Single	126	57	1/4	3.0A / 115V / 60Hz
BDD59-2B(S)-HC	Keg Cooler 2 Doors	59" x 27 1/8" x 37"	1500 x 688 x 940	19.4	2	2 Single	216	98	3/8	3.5A / 115V / 60Hz
BDD69-3B(S)-HC	Keg Cooler 2 Doors	69 1/8" x 27 1/8" x 37"	1755 x 688 x 940	23.4	3	1 Single / 1 Twin	240	109	3/8	3.5A / 115V / 60Hz
BDD90-4B(S)-HC	Keg Cooler 3 Doors	90 3/8" x 27 1/8" x 37"	2295 x 688 x 940	31.6	4	2 Twin	298	135	3/8	3.5A / 115V / 60Hz

BLUE AIR has the right to change specifications without further notice.

Bottle Coolers

- Stainless steel top with sliding lid doors
- Standard bottle cap opener and cap catcher
- Adjustable polyethylene dividers
- Slide lid door locks
- Stainless steel flooring with drain



BBC-36B-HC



BBC-50B-HC



BBC-65B-HC



BBC-80B-HC



BBC-95B-HC

MODEL	DESCRIPTION	EXTERIOR L" x D" x H"		CU.FT	WEIGHT		HP	AMP/VOLTAGE
		inch	mm		lbs	kg		
BBC-36B-HC	Bottle Cooler 1 Door	36 3/4" x 28 1/2" x 33 3/8"	934 x 723 x 849	9.9	128	58	1/4	3.0A / 115V / 60Hz
BBC-50B-HC	Bottle Cooler 2 Doors	50" x 28 1/2" x 33 3/8"	1270 x 723 x 849	14.8	196	89	3/8	3.5A / 115V / 60Hz
BBC-65B-HC	Bottle Cooler 2 Doors	64 1/2" x 28 1/2" x 33 3/8"	1638 x 723 x 849	20.1	229	104	3/8	3.5A / 115V / 60Hz
BBC-80B-HC	Bottle Cooler 3 Doors	80 1/2" x 28 1/2" x 33 3/8"	2045 x 723 x 849	26	273	124	3/8	3.5A / 115V / 60Hz
BBC-95B-HC	Bottle Cooler 3 Doors	95" x 28 1/2" x 33 3/8"	2412 x 723 x 849	31.3	302	137	3/8	3.5A / 115V / 60Hz

*BLUE AIR has the right to change specifications without further notice.

Back Bar Coolers

- Heavy duty stainless steel countertop
- Recessed door handles
- 1" height adjustable shelving
- Field reversible door – BBB23-HC model only



BBB23-1B(S)-HC BBB59-2B(S)-HC BBB69-3B(S)-HC BBB90-4B(S)-HC

MODEL	DESCRIPTION	EXTERIOR L" x D" x H"		CU.FT	SHELVES	WEIGHT		HP	AMP/VOLTAGE
		inch	mm			lbs	kg		
BBB23-1B(S)-HC	Back Bar Cooler 1 Door	23 3/8" x 31 1/8" x 39 1/8"	595 x 792 x 995	7.9	2	128	58	1/4	3A / 115V / 60Hz
BBB59-2B(S)-HC	Back Bar Cooler 2 Doors	59" x 27 1/8" x 37"	1500 x 688 x 940	19.4	4	220	100	3/8	3.5A / 115V / 60Hz
BBB69-3B(S)-HC	Back Bar Cooler 2 Doors	69 1/8" x 27 1/8" x 37"	1755 x 688 x 940	23.4	4	251	114	3/8	3.5A / 115V / 60Hz
BBB90-4B(S)-HC	Back Bar Cooler 3 Doors	90 3/8" x 27 1/8" x 37"	2295 x 688 x 940	31.6	6	309	140	3/8	3.5A / 115V / 60Hz

*BLUE AIR has the right to change specifications without further notice.

Glass Door Back Bar Coolers

- Heavy duty stainless steel countertop
- Glass door model with all metal handles
- 1" height adjustable shelving



BBB23-1BG(SG)-HC BBB59-2BG(SG)-HC BBB69-3BG(SG)-HC BBB90-4BG(SG)-HC

MODEL	DESCRIPTION	EXTERIOR L" x D" x H"		CU.FT	SHELVES	WEIGHT		HP	AMP/VOLTAGE
		inch	mm			lbs	kg		
BBB23-1BG(SG)-HC	Back Bar Cooler 1 Glass Door	23 3/8" x 31 1/8" x 39 1/8"	595 x 792 x 995	7.9	2	132	60	1/4	3A / 115V / 60Hz
BBB59-2BG(SG)-HC	Back Bar Cooler 2 Glass Doors	59" x 27 1/8" x 37"	1500 x 688 x 940	19.4	4	236	107	3/8	3.5A / 115V / 60Hz
BBB69-3BG(SG)-HC	Back Bar Cooler 2 Glass Doors	69 1/8" x 27 1/8" x 37"	1755 x 688 x 940	23.4	4	262	119	3/8	3.5A / 115V / 60Hz
BBB90-4BG(SG)-HC	Back Bar Cooler 3 Glass Doors	90 3/8" x 27 1/8" x 37"	2295 x 688 x 940	31.6	6	331	150	3/8	3.5A / 115V / 60Hz

*BLUE AIR has the right to change specifications without further notice.

Narrow Back Bar Coolers

- Heavy duty stainless steel countertop
- Recessed door handles
- 24" narrow depth
- 1" height adjustable shelving



BNB-48BT-HC BNB-60BT-HC BNB-72BT-HC

MODEL	DESCRIPTION	EXTERIOR L" x D" x H"		CU.FT	SHELVES	WEIGHT		HP	AMP/VOLTAGE
		inch	mm			lbs	kg		
BNB-48BT-HC	Narrow Back Bar Cooler 2 Doors	48 1/4" x 23 7/8" x 35" 3/8"	1225 x 608 x 900	11.6	2	168	76	3/8	3.5A / 115V / 60Hz
BNB-60BT-HC	Narrow Back Bar Cooler 2 Doors	60 1/4" x 23 7/8" x 35" 3/8"	1530 x 608 x 900	15.6	4	212	96	3/8	3.5A / 115V / 60Hz
BNB-72BT-HC	Narrow Back Bar Cooler 3 Doors	72 1/4" x 23 7/8" x 35" 3/8"	1835 x 608 x 900	19.6	6	249	113	3/8	3.5A / 115V / 60Hz

*BLUE AIR has the right to change specifications without further notice.

Open Display Cases

- Pre-coated steel interior and exterior
- High density foamed in place polyurethane insulation and Environmentally safe
- Perforated interior rear wall and top vents for more efficient air circulation cooling
- Standard night curtain
- Led interior lighting

- Rear air guard
- Glass or solid side panels
- Four (4) 1" height adjustable shelves
- R-404 refrigerant
- Self-contained bottom mounted refrigeration system



BOD-36G / BOD-48G



BOD-60G / BOD-72G



BOD-36S / BOD-48S



BOD-60S / BOD-72S

MODEL	DESCRIPTION	EXTERIOR L" x D" x H"		CU.FT	SHELVES	WEIGHT			AMP/VOLTAGE
		inch	mm			lbs	kg	HP	
BOD-36S	Open Display Case	36 1/8" x 32 1/2" x 80"	918 x 826 x 2032	19.6	4	437	198	1	16.5A / 115V / 60Hz
BOD-48S	Open Display Case	48 1/8" x 32 1/2" x 80"	1222 x 826 x 2032	26.7	4	525	238	1	16.5A / 115V / 60Hz
BOD-60S	Open Display Case	60 1/8" x 32 1/2" x 80"	1527 x 826 x 2032	33.9	4	591	268	1	16.5A / 115V / 60Hz
BOD-72S	Open Display Case	72 1/8" x 32 1/2" x 80"	1832 x 826 x 2032	41	8	743	337	1	15A / 208~230V/60Hz
BOD-36G	Open Display Case	36 1/8" x 32 1/2" x 80"	918 x 826 x 2032	19.6	4	516	234	1	16.5A / 115V / 60Hz
BOD-48G	Open Display Case	48 1/8" x 32 1/2" x 80"	1222 x 826 x 2032	26.7	4	602	273	1	16.5A / 115V / 60Hz
BOD-60G	Open Display Case	60 1/8" x 32 1/2" x 80"	1527 x 826 x 2032	33.9	4	670	304	1	16.5A / 115V / 60Hz
BOD-72G	Open Display Case	72 1/8" x 32 1/2" x 80"	1832 x 826 x 2032	41	8	818	337	1	15A / 208~230V/60Hz

*BLUE AIR has the right to change specifications without further notice.

Chest Freezers

- New line of Blue Air chest freezers



BCF56-HC / BCF80-HC

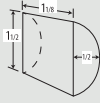
- Painted Galvanized Steel Exterior to minimize dents, scratches and rust
- Epoxy coated wire baskets to minimize peeling and rust
- Polyurethane insulation - CFC free, high density insulation foam which is eco friendly and energy efficient
- Bottom drain with plug allowing easy cleaning
- LED Interior lighting

MODEL	DESCRIPTION	EXTERIOR L" x D" x H"		CU.FT	BASKET	WEIGHT			AMP/VOLTAGE
		inch	mm			lbs	kg	HP	
BCF56-HC	Chest Freezers	56 1/8" x 29 5/8" x 33" 1/8"	1426 x 752 x 841	17.6	4	170	77	1/2	2.4A / 115V / 60Hz
BCF80-HC	Chest Freezers	79 3/4" x 29 5/8" x 33" 1/8"	2026 x 752 x 841	24.7	6	256	116	3/4	3.8A / 115V / 60Hz

*BLUE AIR has the right to change specifications without further notice.

Ice Machines / Ice storage Bins

- Digital self diagnostic system
- Units produce individual crescent ice cubes
- Stainless steel cabinets
- Stainless steel evaporator
- Removable air filter
- Energy star rated models



Models produce crescent shaped ice.



Undercounter Ice Machines

Ice Bins



BLUI-100A / BLUI-150A



BLUI-250A



BLIB-300S



BLIB-500S

BLUI AND BLIB

MODEL	DESCRIPTION	EXTERIOR L" x D" x H"		WEIGHT		ICE PRODUCTION	AMP/VOLTAGE	ENERGY STAR
		inch	mm	lbs	kg			
BLUI-100A	Ice Machine	19 3/4" x 25 5/8" x 38"	500 x 651 x 965	108	49	106 Lbs/day	5.2A / 115V / 60Hz	
BLUI-150A	Ice Machine	25" x 27 3/4" x 38 5/8"	635 x 708 x 975	123	56	150 Lbs/day	7A / 115V / 60Hz	★
BLUI-250A	Ice Machine	30" x 30" x 38 1/2"	764 x 764 x 978	141	64	251 Lbs/day	7A / 115V / 60Hz	
BLIB-300S	Ice storage Bin	22" x 32 1/2" x 46 1/4"	558 x 825 x 1174	75	34	N/A	N/A	N/A
BLIB-500S	Ice storage Bin	30" x 32 1/2" x 46 1/4"	762 x 825 x 1174	93	42	N/A	N/A	N/A

*BLUE AIR has the right to change specifications without further notice.

Modular Ice Machines



BLMI-300A / BLMI-500A



BLMI-650A



BLMI-900A



BLMI-500A & BLIB-500S



BLMI-500AD & BLIB-500S

BLMI

MODEL	DESCRIPTION	EXTERIOR L" x D" x H"		WEIGHT		ICE PRODUCTION	AMP/VOLTAGE	ENERGY STAR
		inch	mm	lbs	kg			
BLMI-300A	Ice Machine	22" x 27 3/8" x 30 5/8"	558 x 696 x 778	117	53	340 Lbs/day	8A / 115V / 60Hz	★
BLMI-500A	Ice Machine	22" x 27 3/8" x 30 5/8"	558 x 696 x 778	130	59	538 Lbs/day	14A / 115V / 60Hz	★
BLMI-500AD	Ice Machine	30" x 24" x 20"	762 x 610 x 560	126	57	530 Lbs/day	14A / 115V / 60Hz	
BLMI-650A	Ice Machine	22" x 27 3/8" x 37 3/4"	558 x 696 x 958	161	73	625 Lbs/day	9A / 208-230V / 60Hz	★
BLMI-900A	Ice Machine	30" x 27 3/8" x 37 3/4"	762 x 696 x 958	190	86	890 Lbs/day	9A / 208-230V / 60Hz	

*BLUE AIR has the right to change specifications without further notice.

CALIFORNIA

223 W. ROSECRANS AVE. GARDENA, CA 90248
T: 310-808-0102 / F: 310-808-0262

HOUSTON

9604 W. TIDWELL ROAD, HOUSTON, TX 77041
T: 713-460-5229 / F: 713-760-5232

NEW JERSEY

9 W. SHELTON TERRACE #A HILLSIDE, NJ 07205
T: 908-688-0970 / F: 908-688-8143

Safes

- Solid steel B rated construction – ½” thick door, 1/4” thick frame
- Auxiliary spring loaded relocking device activated by hard impacts
- Pre-drilled anchor-down hole for security and three active ¾” diameter locking bolts
- Solid steel dead bar prevents door removal during forced entry attempts
- Easy to use digital lock
- Solid steel hinges
- 90 days part and labor warranty



MODEL	DESCRIPTION	EXTERIOR L” x D” x H”		INTERIOR L” x D” x H”		WEIGHT	
		inch	mm	inch	mm	lbs	kg
BSD1E	Digital Lock Safe 1 Door	13 1/2” x 15” x 19”	340 x 380 x 480	10 1/2” x 12 3/4” x 10 1/4”	266 x 324 x 260	112	51
BSD2EE	Digital Lock Safe 2 Doors	15 3/4” x 15 3/4” x 32 1/4”	400 x 400 x 820	12 5/8” x 13 1/4” x 10 1/4”	320 x 336 x 260	187	85

*BLUE AIR has the right to change specifications without further notice.

Equipment Stands

- 16 gauge stainless steel top
- 1” adjustable galvanized steel legs
- Adjustable Galvanized steel undershelf



MODEL	DIMENSIONS L” x D” x H”		WEIGHT	
	inch	mm	lbs	kg
ES3012	12” x 30” x 27 3/4”	305 x 762 x 705	34	15
ES3024	24” x 30” x 27 3/4”	610 x 762 x 705	41	19
ES3036	36” x 30” x 27 3/4”	915 x 762 x 705	57	26
ES3048	48” x 30” x 27 3/4”	1220 x 762 x 705	70	32
ES3060	60” x 30” x 27 3/4”	1524 x 762 x 705	83	38
ES3072	72” x 30” x 27 3/4”	1829 x 762 x 705	96	44

*BLUE AIR has the right to change specifications without further notice.

Double Tier Overshelves

- 430 Stainless steel top
- 18 gauge stainless steel legs, socket and bracket



MODEL	DIMENSIONS L” x D” x H”		WEIGHT	
	inch	mm	lbs	kg
BDOS1227	27” x 12” x 32”	686 x 305 x 813	25	12
BDOS1236	36” x 12” x 32”	915 x 305 x 813	34	16
BDOS1248	48” x 12” x 32”	1220 x 305 x 813	40	19
BDOS1260	60” x 12” x 32”	1524 x 305 x 813	47	22
BDOS1272	72” x 12” x 32”	1829 x 305 x 813	52	24
BDOS1627	27” x 16” x 32”	686 x 407 x 813	37	17
BDOS1636	36” x 16” x 32”	915 x 407 x 813	42	20
BDOS1648	48” x 16” x 32”	1220 x 407 x 813	50	23
BDOS1660	60” x 16” x 32”	1524 x 407 x 813	58	27
BDOS1672	72” x 16” x 32”	1829 x 407 x 813	69	32

*BLUE AIR has the right to change specifications without further notice.

Meat Grinder

- Gear powered screw motor
- Easily removed and cleaned
- Heavy duty machine grinds up to 9 to 14 LBS per minute
- 1 Year part and labor warranty

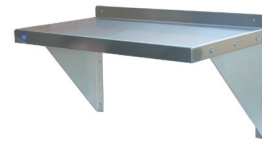


MODEL	DIMENSIONS W” x D” x H”		WEIGHT
	inch	mm	lbs kg
BMG480	10 1/2” x 18” x 18”	267 x 457 x 457	51 23

*BLUE AIR has the right to change specifications without further notice.

Wall Shelves

- Constructed from 18 gauge stainless steel
- Equipped with stainless steel brackets



MODEL	DIMENSIONS L” x D” x H”		BRACKETS	WEIGHT	
	inch	mm		lbs	kg
WS1224	24” x 12 x 12	610 x 305 x 305	2	12	5
WS1236	36” x 12 x 12	915 x 305 x 305	2	15	7
WS1248	48” x 12 x 12	1220 x 305 x 305	2	18	8
WS1260	60” x 12 x 12	1524 x 305 x 305	2	20	9
WS1272	72” x 12 x 12	1829 x 305 x 305	2	24	11
WS1296	96” x 12 x 12	2438 x 305 x 305	2	30	1
WS1424	24” x 14 x 14	610 x 356 x 356	2	14	6
WS1436	36” x 14 x 14	915 x 356 x 356	2	17	8
WS1448	48” x 14 x 14	1220 x 356 x 356	2	20	9
WS1460	60” x 14 x 14	1524 x 356 x 356	2	25	11
WS1472	72” x 14 x 14	1829 x 356 x 356	3	28	13
WS1496	96” x 14 x 14	2438 x 356 x 356	3	36	16

*BLUE AIR has the right to change specifications without further notice.

Work Tables

- 18 gauge stainless steel top
- 1” adjustable galvanized steel legs
- Adjustable Galvanized steel undershelf



MODEL	DIMENSIONS L” x D” x H”		WEIGHT	
	inch	mm	lbs	kg
EW2424	24” x 24” x 34”	610 x 610 x 864	40	18
EW2430	30” x 24” x 34”	762 x 610 x 864	46	21
EW2436	36” x 24” x 34”	915 x 610 x 864	51	23
EW2448	48” x 24” x 34”	1219 x 610 x 864	62	28
EW2460	60” x 24” x 34”	1524 x 610 x 864	73	33
EW2472	72” x 24” x 34”	1829 x 610 x 864	82	37
EW2484	84” x 24” x 34”	2134 x 610 x 864	91	41
EW2496	96” x 24” x 34”	2438 x 610 x 864	104	47
EW3018	18” x 30” x 34”	457 x 762 x 864	43	20
EW3030	30” x 30” x 34”	762 x 762 x 864	52	24
EW3036	36” x 30” x 34”	915 x 762 x 864	60	27
EW3048	48” x 30” x 34”	1219 x 762 x 864	69	31
EW3060	60” x 30” x 34”	1524 x 762 x 864	81	37
EW3072	72” x 30” x 34”	1829 x 762 x 864	92	42
EW3084	84” x 30” x 34”	2134 x 762 x 864	101	46
EW3096	96” x 30” x 34”	2438 x 762 x 864	115	52

*BLUE AIR has the right to change specifications without further notice.

Commercial Sinks

– STS304 18 gauge stainless steel

– 1" adjustable stainless steel legs



One Compartment Sinks

MODEL	PRODUCT DESCRIPTION	OVERALL SIZE L" X D" X H"		BOWL SIZE L" X D" X H"		WEIGHT	
		inch	mm	inch	mm	lbs	kg
BS1-18-12/L	1 Com 1 Left Drain Board	39" x 24" x 44 1/2"	991 x 610 x 1130	18" x 18" x 12"	458 x 458 x 305	42	19
BS1-18-12/R	1 Com 1 Right Drain Board	39" x 24" x 44 1/2"	991 x 610 x 1130	18" x 18" x 12"	458 x 458 x 305	42	19
BS1-18-12/2D	1 Com 2 Drain Board	54" x 24" x 44 1/2"	1372 x 610 x 1130	18" x 18" x 12"	458 x 458 x 305	50	23
BSP-18	Prep Sink/Mop Sink	21 1/2" x 21 1/2" x 44 1/2"	546 x 546 x 1130	18" x 18" x 13"	458 x 458 x 330	31	14



BS1-18-12/L



BS1-18-12/R



BS1-18-12/2D



BSP-18

Two Compartment Sinks

MODEL	PRODUCT DESCRIPTION	OVERALL SIZE L" X D" X H"		BOWL SIZE L" X D" X H"		WEIGHT	
		inch	mm	inch	mm	lbs	kg
BS2-18-12/L	2 Com 1 Left Drain Board	57" x 24" x 44 1/2"	1448 x 610 x 1130	18" x 18" x 12"	458 x 458 x 305	61	28
BS2-18-12/R	2 Com 1 Right Drain Board	57" x 24" x 44 1/2"	1448 x 610 x 1130	18" x 18" x 12"	458 x 458 x 305	61	28
BS2-18-12/2D	2 Com 2 Drain Board	72" x 24" x 44 1/2"	1829 x 610 x 1130	18" x 18" x 12"	458 x 458 x 305	70	32
BS2-18-12N	2 Com No Drain Board	42" x 24" x 44 1/2"	1067 x 610 x 1130	18" x 18" x 12"	458 x 458 x 305	47	21



BS2-18-12/L



BS2-18-12/R



BS2-18-12/2D



BS2-18-12N

Three Compartment Sinks

MODEL	PRODUCT DESCRIPTION	OVERALL SIZE L" X D" X H"		BOWL SIZE L" X D" X H"		WEIGHT	
		inch	mm	inch	mm	lbs	kg
BS3-18-12/L	3 Com 1 Left Drain Board	75" x 24" x 44 1/2"	1905 x 610 x 1130	18" x 18" x 12"	458 x 458 x 305	81	37
BS3-18-12/R	3 Com 1 Right Drain Board	75" x 24" x 44 1/2"	1905 x 610 x 1130	18" x 18" x 12"	458 x 458 x 305	81	37
BS3-18-12/2D	3 Com 2 Drain Board	90" x 24" x 44 1/2"	2286 x 610 x 1130	18" x 18" x 12"	458 x 458 x 305	85	39
BS3-18-12N	3 Com No Drain Board	60" x 24" x 44 1/2"	1524 x 610 x 1130	18" x 18" x 12"	458 x 458 x 305	72	33



BS3-18-12/L



BS3-18-12/R



BS3-18-12/2D



BS3-18-12N

Hand Sinks/24x24 Bowl sinks

MODEL	PRODUCT DESCRIPTION	OVERALL SIZE L" X D" X H"		BOWL SIZE L" X D" X H"		WEIGHT	
		inch	mm	inch	mm	lbs	kg
BSH-14/LF	Hand Sink	17" x 15" x 14"	432 x 381 x 356	10" x 14" x 5 1/2"	254 x 356 x 127	15	7
BSP-24-14	Prep Sink	27 1/2" x 27 1/2" x 45"	699 x 699 x 1143	24" x 24" x 14"	610 x 610 x 356	40	18
BS3-24-14N	3 Com No Drain Board	78" x 30" x 44 1/2"	1981 x 762 x 1130	24" x 24" x 14"	610 x 610 x 356	105	48
BS3-24-14/2D	3 Com 2 Drain Board	120" x 30" x 44 1/2"	3048 x 762 x 1130	24" x 24" x 14"	610 x 610 x 356	127	58



BSH-14/LF



BSP-24-14



BS3-24-14/2D



BS3-24-14N

Corner sink

MODEL	PRODUCT DESCRIPTION	OVERALL SIZE L" X D" X H"		BOWL SIZE L" X D" X H"		WEIGHT	
		inch	mm	inch	mm	lbs	kg
3C18-12L-2D	Corner Sink	57 1/4" x 57 1/4" x 44 1/2"	1454 x 1454 x 1130	18" x 18" x 12"	458 x 458 x 305	91	41

*BLUE AIR has the right to change specifications without further notice.



3C18-12L-2D

TOLL FREE 1.866.677.8500

CONTACT OUR DISTRIBUTOR BELOW FOR ANY QUESTIONS OR QUOTE REQUEST.

LANE EQUIPMENT COMPANY

2030 Richmond Ave.
Houston, TX 77098
Ph# 713-5295761
Fax# 713-529-1249

1507 West Avenue
San Antonio, TX 78201
Ph# 210-736-1616
Fax# 210-736-5487

7801 North Lamar, Ste C43
Austin, TX 78752
Ph# 512-302-0161
Fax# 512-302-0875

410 Frontage Road
Donna, TX 78537
Ph# 956-464-7817
Fax# 956-464-6655

**223 W. ROSECRANS AVE.
GARDENA, CA 90248
T. 310-808-0102
F. 310-808-0242**

**9604 W. TIDWELL ROAD
HOUSTON, TX 77041
T. 713-460-5229
F. 713-760-5232**

**9 W. SHELTON TERRACE #A
HILLSIDE, NJ 07205
T. 908-688-0970
F. 908-688-8143**